

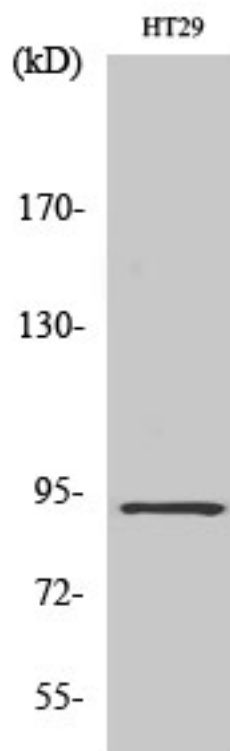


CAGE-1 Polyclonal Antibody

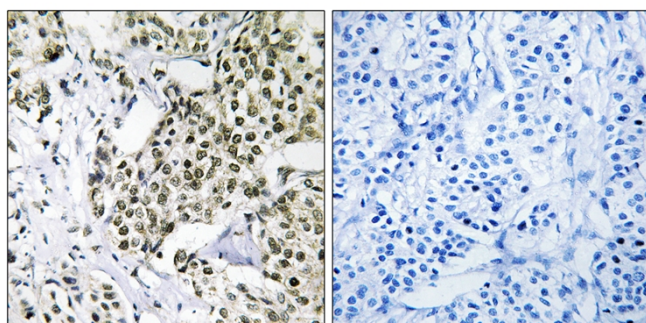
| | |
|----------------------------------|---|
| Catalog No | YP-Ab-00340 |
| Isotype | IgG |
| Reactivity | Human;Rat;Mouse; |
| Applications | WB;IHC;IF;ELISA |
| Gene Name | CAGE1 |
| Protein Name | Cancer-associated gene 1 protein |
| Immunogen | The antiserum was produced against synthesized peptide derived from human CAGE1. AA range:711-760 |
| Specificity | CAGE-1 Polyclonal Antibody detects endogenous levels of CAGE-1 protein. |
| Formulation | Liquid in PBS containing 50% glycerol, 0.5% BSA and 0.02% sodium azide. |
| Source | Polyclonal, Rabbit,IgG |
| Purification | The antibody was affinity-purified from rabbit antiserum by affinity-chromatography using epitope-specific immunogen. |
| Dilution | WB: 1/500 - 1/2000. IHC: 1/100 - 1/300. ELISA: 1/40000.. IF 1:50-200 |
| Concentration | 1 mg/ml |
| Purity | ≥90% |
| Storage Stability | -20°C/1 year |
| Synonyms | CAGE1; CTAG3; Cancer-associated gene 1 protein; CAGE-1; Cancer/testis antigen 3; CT3 |
| Observed Band | 90kD |
| Cell Pathway | |
| Tissue Specificity | Testis-specific expression in normal tissues, but wide expression among cancer tissues and cell lines. |
| Function | tissue specificity:Testis-specific expression in normal tissues, but wide expression among cancer tissues and cell lines., |
| Background | tissue specificity:Testis-specific expression in normal tissues, but wide expression among cancer tissues and cell lines., |
| matters needing attention | Avoid repeated freezing and thawing! |
| Usage suggestions | This product can be used in immunological reaction related experiments. For more information, please consult technical personnel. |



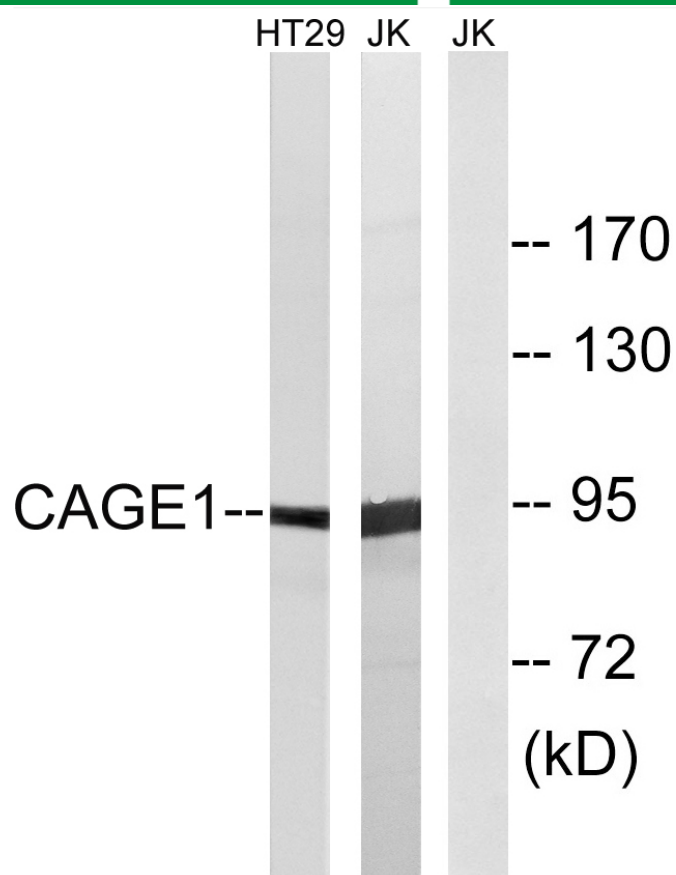
Products Images



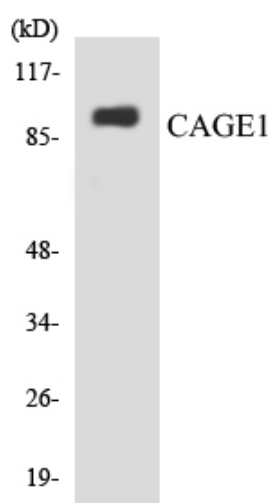
Western Blot analysis of various cells using CAGE-1 Polyclonal Antibody diluted at 1:2000



Immunohistochemistry analysis of paraffin-embedded human breast carcinoma tissue, using CAGE1 Antibody. The picture on the right is blocked with the synthesized peptide.



Western blot analysis of lysates from HT-29 and Jurkat cells, using CAGE1 Antibody. The lane on the right is blocked with the synthesized peptide.



Western blot analysis of the lysates from HepG2 cells using CAGE1 antibody.